

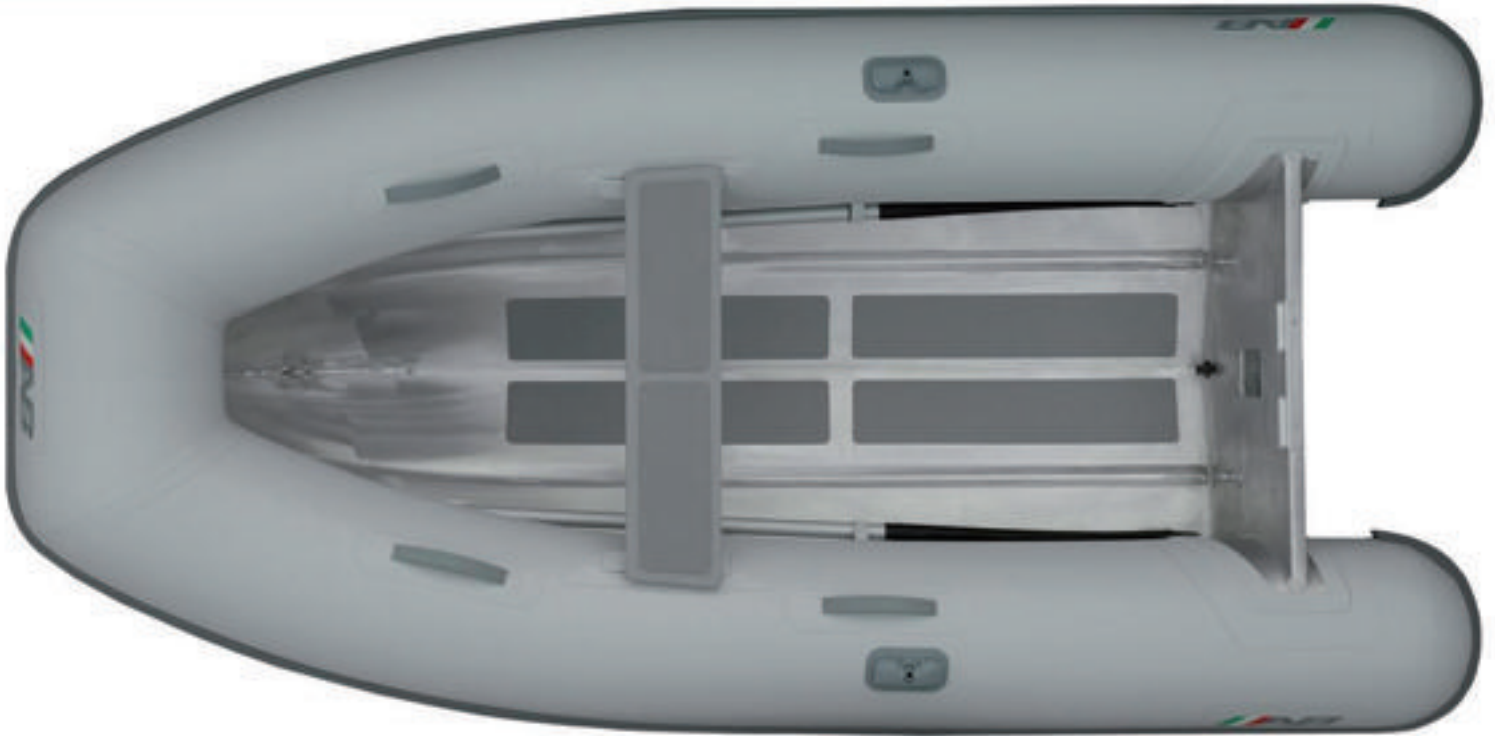


A B I N F L A T A B L E S

Iamina

8UL

Ultra Light Aluminum Tenders



S P E C S

Overall Length	: 8'5" / 2.56m	Number of Chambers	: 2	Shaft Length	: 15" / 38.1cm
Overall Beam	: 4'11" / 1.50m	Person Capacity	: 4	RDC Design Category	: C
Inside Length	: 5'10" / 1.79m	Weight	: 68lb / 31kg		
Inside Beam	: 2'2" / 0.66m	Recommended HP	: 4hp / 3.0kw		
Tube Diameter	: 16" / 0.40m	Maximum HP	: 5hp / 3.8kw		

S T A N D A R D F E A T U R E S

- Shallow "V" Marine Grade Aluminum Hull
- Non-Skid Rubber Floor Panels
- Plastic External Transom Plate
- Aluminum Internal Transom Plate With Security Lip
- Aluminum Bow Eye
- 3 Aluminum Davit Lifting Points
- Aluminum Bow Towing Rings
- Deck Drain with Plug
- Orca (CSM) Five Layer Coated Fabric
- Raised Single Rub Rail
- Push Push Plastic Non-Corrosive 2 Stage Inflation Valves
- 1 Front Orca (CSM) Fabric Handles on Tubes
- 2 Inside Bow Single Orca (CSM) Fabric Handles on Tubes
- 2 Inside Stern Single Orca (CSM) Fabric Handles on Tubes
- Removable Rowing Seat
- Oarlock Bases
- Telescopic Oars with Aluminum Shaft
- Paddle Holders
- Hand Pump
- Maintenance Kit
- Owner's Manual
- 3 Layer Reinforced Seams

O P T I O N A L F E A T U R E S

- Tube Chaps
- Boat Cover
- Chock Set

